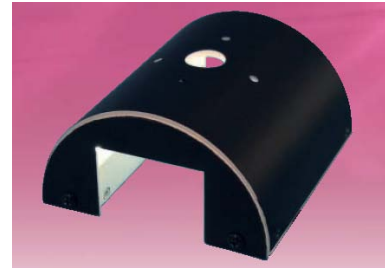


IMMEDIATE RELEASE

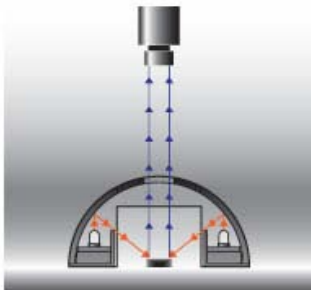
November 3, 2009, Milford, NH

New Tunnel-Type Machine Vision Dome Light at LDDLIGHT.com

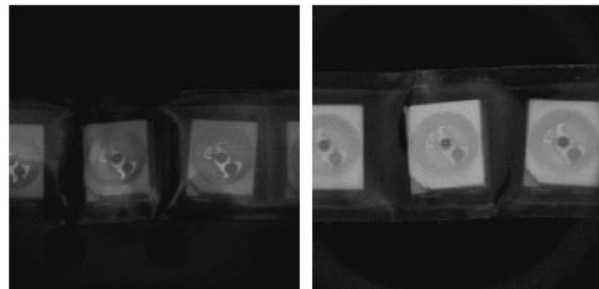
The new IQD Series Tunnel-Type Dome Lights available from LDDLIGHT.com integrate easily into production systems where parts on conveyor lines must be presented to a vision system for measurement, inspection or code reading. The IQD's cylindrical dome delivers a broad angle of illumination onto a part's surface, reducing shadows that can make imaging shiny spherical and irregular surfaces problematic. With the IQD Series tunnel (aka "half-pipe") configuration, large entry and exit doorways allow parts to be positioned inside the dome using standard part conveyance systems.



IQD models are diffuse and available with red, white, blue or green LEDs. For more details visit <http://www.lddligh.com>.



**The IQD's Wide Angle
of Illumination**



Electronic Components in Tape & Reel Packaging

Shadows and reflections are evident (left photo) when illuminated with standard Dome Light. With IQD Series (right photo) shadows and reflections are minimized.

About LDDLIGHT.com

LDDLIGHT.com offers an extensive lighting line. Detailed and graphical specifications assist you in choosing lighting techniques. Simple menus guide you through model choices and help you add the right light and accessories to your shopping cart. Enter your account information, select a shipping method, and use the encrypted checkout for fast, secure credit card purchases. Products are quickly shipped, and backed by a 2 year warranty and "no questions" return policy.

LDDLIGHT.com is the domain of LDD Trading Associates, LLC.

LDD's headquarters are at 119B Emerson Road, Milford, NH 03055.

LDD can be reached at sales@lddligh.com, 603-732-0057 or FAX to 603-732-0058.